

STRATUM planter

The Stratum planter is a versatile, metal planter suitable for a wide range of applications. It is available with a choice of colours. Choose from a range of accessories to ensure that the Stratum planter is manufactured to suit your specific requirements.

Stratum planters are suitable for:

- Roof Garden planters
- Modular planters
- Tree planters
- Large planters
- Barrier planters
- Shaped planters
- Moveable planters
- Planter Walling (without base)
- Planters with integral bench seating

Stratum planter product details

Stratum versatile planters

Stratum planter product specification

Stratum planter accessories

Watering system details

Adjustable feet details

Stratum planter material finishes

Stratum planter material specification



Stratum aluminium planter, polyester powder coated dark grey, satin finish

STRATUM planter

PRODUCT DETAILS

General

The Stratum modular external planter, is a multi-use, metal planter, available in a range of sizes to suit your scheme and budget.

Planters up to 2.8 x 2.8m plan size can be delivered fully assembled ready for planting.

Larger planters can be manufactured in sections and delivered for assembly on site.

Shaped planters can be manufactured and supplied including:- square, rectangular, L shaped, U shaped and Z shaped planters.

A number of planter accessories are available to ensure that the Stratum planter is suitable for your specific scheme.

Standard base

The Stratum, modular metal planter, is constructed by fixing an aluminium planter body to a timber base. The planter modules are manufactured in sections for bolting together to create large, long and shaped planters.

The planter base is constructed using 95x45mm FSC®-certified treated redwood with 18mm FSC®-certified hardwood faced plywood. The module is strengthened using cross brace straps or steel cross brace frames.

When fully constructed, the base of the planter is fully lined with a geo-textile lining which allows water to drain through whilst retaining the soil fines.



Standard base comprising of 95x45mm FSC®-certified treated redwood frame with 18mm FSC®-certified hardwood faced plywood



Optional base

The Stratum metal planter can be constructed by bolting an aluminium planter body to a fully welded mild steel base frame.

The internal base is constructed using 75x50x6mm mild steel angle. The planter walls are strengthened using 50x10mm cross brace straps. FSC®-certified hardwood faced plywood is laid onto the base. Planter feet are fitted to the underside of the base frame, to ensure that the load is safely transferred to the ground.

When fully constructed, the base of the planter is fully lined with a geo-textile lining which allows water to drain through whilst retaining the soil fines.

Leg types available

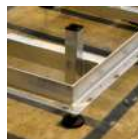


Standard base has no legs
Base sits on level ground



Optional base with 50x50mm mild steel SHS legs

Optional adjustable feet



M30 adjustable legs are fitted mild steel brackets that are welded to the optional galvanised mild steel base

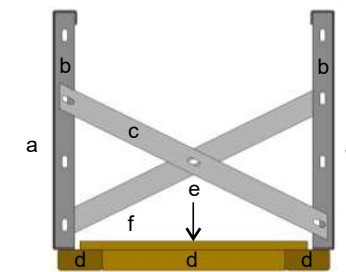


Street Design

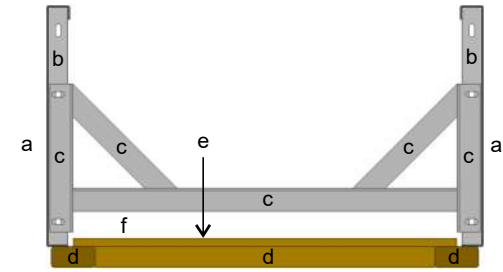
Unit 35 Hayhill Industrial Estate Barrow upon Soar Leicestershire LE12 8LD
01509 815335 sdl@street-design.com www.street-design.com

UK Street Furniture Designers & Manufacturers

Section thro' planters with standard base



Section thro' narrow planters



Section thro' wider planters

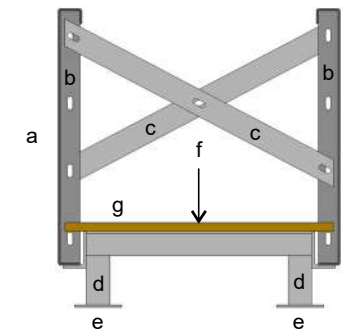
Key

- a - 4mm Aluminium
- b - 4mm Aluminium
- c - 50x10mm galvanised mild steel straps
- d - 95x45mm FSC®-certified treated redwood
- e - 18mm FSC®-certified hardwood faced plywood
- f - Geo-textile membrane filter lining

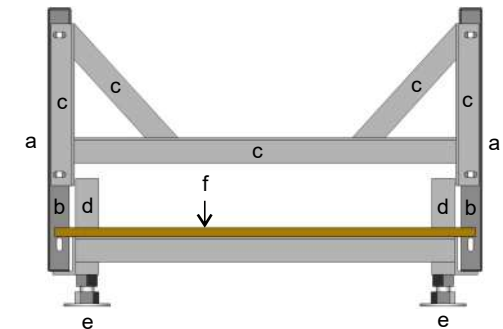
Key

- a - 4mm Aluminium
- b - 4mm Aluminium
- c - Galvanised steel cross frame
- d - 95x45mm FSC®-certified treated redwood
- e - 18mm FSC®-certified hardwood faced plywood
- f - Geo-textile membrane filter lining

Section thro' planters with optional bases



Section thro' planter with optional base



Section thro' planter with adjustable feet

Key

- a - 4mm Aluminium
- b - 4mm Aluminium
- c - 50x10mm galvanised mild steel straps
- d - 50x50x3mm mild steel SHS
- e - 100x100x5mm mild steel footplate
- f - 18mm FSC®-certified hardwood faced plywood
- g - Geo-textile membrane filter lining

Key

- a - 4mm Aluminium
- b - 4mm Aluminium
- c - Galvanised mild steel cross frame
- d - 50x50x3mm mild steel SHS
- e - M30 adjustable foot
- f - 18mm FSC®-certified hardwood faced plywood
- g - Geo-textile membrane filter lining

STRATUM planter

PRODUCT SPECIFICATION



Street
Design

Unit 35 Hayhill Industrial Estate Barrow upon Soar Leicestershire LE12 8LD
01509 815335 sdl@street-design.com www.street-design.com

UK Street Furniture Designers & Manufacturers

Technical information		
Material		
Planter walling	4mm thick sheet aluminium	
Planter walling finish	Polyester powder coated	
Standard base construction		
Standard base frame material	95x45mm FSC®-certified treated redwood	
Standard base frame finish	Natural	
Standard base floor	18mm thick FSC®-certified hardwood faced plywood	
Optional base construction		
Optional base frame material	75x50x6 angle, 50x50x3 SHS and 100x5mm flat mild steel	
Optional base frame finish	Hot dip galvanised	
Optional base floor	18mm thick FSC®-certified hardwood faced plywood	
Optional base leg (leg with footplate)	50x50x3 SHS and 100x5mm flat mild steel	
Optional base leg (plinth with footplate)	75x50x6 angle and 100x5mm flat mild steel	
Accessories		
	Adjustable feet	Watering systems
	Tree anchor fittings	Trellis panels
	Bench seating	Pergola structures
Guarantee		
Standard planter heights	568mm	943mm
Other heights available on request		
Standard planting depths	450mm	825mm
Weights		
Walling panels	11 kgs / linear m	19 kgs / linear m
Standard timber base	19 kgs / m²	19 kgs / m²
Optional galvanised mild steel base	29 kgs / m²	29 kgs / m²
Light fill material can be based on:	1000 kgs / m³	
Heavy fill material can be based on:	2000 kgs / m³	

Construction

All Street Design products are designed and manufactured using only quality, durable materials, construction details and fixings, to provide a long-lasting, durable life expectancy.

Assembly

Planters up to 2.8 x 2.8m can be delivered to site fully assembled for off loading and positioning on site. Planters larger than 2.8m can be supplied in sections for bolting together on site.

Materials (with Standard base)

4mm Aluminium sheet.
95x45mm FSC®-certified treated redwood and 18mm FSC®-certified hardwood faced plywood.
All mild steel fixings will be M10 size and have a bright zinc plated finish.
Planters will be fitted with a geo-textile filter fabric lining, which allows the water to drain through the planter, while retaining the fill material.

Materials (with Optional base)

75x50x3mm mild steel RHS, 75x50x6 and 50x50x5mm mild steel angles, 50x10 and 50x5mm mild steel flats and 18mm FSC®-certified hardwood faced plywood.
All mild steel fixings will be M10 size and have a bright zinc plated finish.
Planters will be fitted with a geo-textile filter fabric lining, which allows the water to drain through the planter, while retaining the fill material.

Planter finishes

The aluminium planter walling will have a polyester powder coated finish. The standard timber base will have a natural finish. The optional mild steel base frame will have a galvanised finish.

Options

Stratum planters are manufactured to order.
Before we can manufacture the planters, we need to know the following:

- plan sizes of planters
- heights of planters
- Powder coating colour
- details of accessories required

Accessories

To enhance your Stratum planter and create a product that is suitable for your specific application, you can add from a range of planter accessories.

- Integral bench seating
- Adjustable feet
- Watering system
- Pergola structures
- Trellis panels

Timber policy

All treated softwood planters are manufactured using materials obtained from growers who operate under the Forest Stewardship Council® (FSC®)
All hardwood planters are manufactured using materials obtained from growers who operate under the Forest Stewardship Council® (FSC®)



STRATUM planter

ACCESSORIES

Stratum modular planters can be manufactured and supplied to include a range of optional accessories. Planters can incorporate; adjustable feet, tree anchor fittings, watering systems, integral bench seating, pergolas and trellis panels.

Adjustable feet

Stratum planters can be manufactured with optional adjustable feet to allow the planter to be height adjusted to ensure that the top of the planter is level. The adjustable feet, allow the planter to be levelled after relocation. See separate page for Adjustable Feet details.

Watering system

Stratum planters can be supplied with a choice of 2 watering systems. Street Design can supply either a reservoir system, with filler pipe or the Mona, subterranean tank system. See separate page for Watering System details.

Tree anchor fittings

Stratum planters can be fitted with galvanised mild steel tree anchor points. They can be fitted at the bottom of the planter to help support the root ball and they can be fitted at the top of the planter to help provide support for the tree. The tree anchors are manufactured using 25x5mm mild steel flat. They have two punched slots and are fitted to the projecting bolt ends on the inside of the planter. The tree anchors are hot dip galvanised.

Pergola structures and trellis panels

Pergola structures and trellis panels can be integrated into the planter construction. Pergolas and trellis allow high level planting and create shading for seating areas.

Bench seating

Integral planter benches, with or without armrests, can be supplied with Stratum planters. As standard 2 bench designs are available. Other designs can be included upon request. The Bexley bench consists of 4 no. 70x45mm timber slats and the Henley bench has 2 no. 145x45mm wide bench slats. The timber slatted benches bolt onto galvanised mild steel brackets, attached to the planter sides. Benches can be fitted to 1, 2, 3 or 4 sides to suit your requirements. The choice of material and finish is the same as for the planter. As standard the brackets will have a galvanised finish. As an optional extra, they can be polyester powder coated.

Planter bench configurations



bench on 1 side



bench on 2 sides opposite



bench on 2 sides adjacent



bench on 2 sides adjacent (mitred)



bench on 3 sides



bench on 3 sides (mitred)



bench on 4 sides



bench on 4 sides (mitred)



Street Design

Unit 35 Hayhill Industrial Estate Barrow upon Soar Leicestershire LE12 8LD
01509 815335 sdl@street-design.com www.street-design.com

UK Street Furniture Designers & Manufacturers



Stratum planter with optional Bexley planter benches fitted to the top of the planter



Stratum planter with optional Bexley planter benches fitted to the side of the planter

STRATUM planter

WATERING SYSTEMS

Watering System 1 - Street Design reservoir system

The Street Design watering accessory is a reservoir system with hydroleca sacks, that maximises the available water.

The system ensures the optimum use of the water and nutrients, delivering the maximum quantity directly to the roots of the plants, resulting in improved root development and optimal plant growth.

General

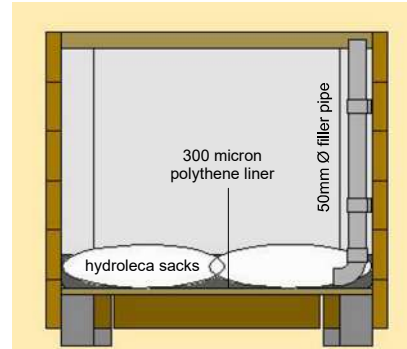
The system consists of a 300 micron thick black polythene liner, hydroleca (pulverised ash granules) sacks and a rigid plastic filler pipe.

The system delivers water directly to the roots via 50mm diameter, rigid plastic pipe, eliminating water wastage. This encourages deep root growth, improving long term drought resistance. The high level filler pipe provides an easy access point for watering and soluble fertiliser application.

Installation

Planters are supplied with the Water System 1 already installed.

Ensure the hydroleca sacks are in the correct position. They will move during transportation. Check that all the plastic pipe connections are properly fitted. The planter is ready for drainage material, filling and planting.



Watering System 1 - section thro' planter



Polythene liner with filler pipe



Hydroleca sacks laid out in base of planter

Watering System 2 - MONA subterranean tank system

Mona watering system

Factory fitted into planter / tree container

The Mona Plant System (MPS) is an advanced, well proven and easy to use subterranean irrigation system. It is the cost effective and environmentally friendly solution for both interior and exterior landscaping.

The Mona Plant System ensures that the water and nutrients are delivered in the right quantity to the root of the plants, resulting in improved root development and optimal plant growth.

General

The system consists of storage tanks, flexible linking pipes and a flexible filler pipe with filler pipe cap. The system delivers water directly to the roots via capillary action, eliminating water wastage. This encourages deep root growth, improving long term drought resistance. The cap and lid provides an easy access point for watering and soluble fertiliser application.

Factory installation

All necessary water tanks, pipes, end caps and air pipes with level indicator, are factory fitted into the planters / tree containers, prior to delivery.

Filling planters

Ensure that the distance between the top of the link tank and the lowest part of the root does not exceed 150mm.

For full details visit: www.green-tech.co.uk



Water storage tanks and filler pipe



Planter ready for soil and planting



Completed planter

STRATUM planter

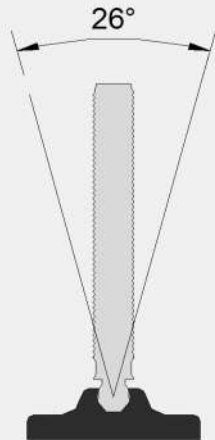
ADJUSTABLE FEET

General details

As an extra cost option, Street Design planters can be supplied with adjustable feet. They allow the planter to be levelled, before filling and planting.

Adjustable feet are particularly useful if the planters are likely to be relocated to a new position.

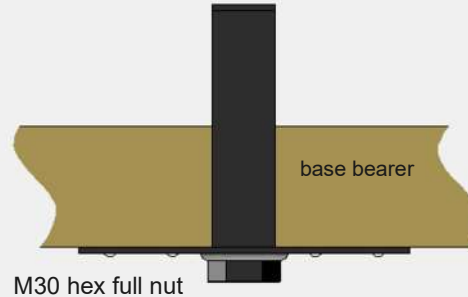
The adjustable foot screw fits into a hex nut, located on the underside of the planter base.



Specification

The adjustable foot comprises of a M30 Ø threaded bar, with spherical end section, press fitted into a black reinforced polyamide base. The swivel base can tilt through 360° to accommodate sloping ground levels. The threaded bar is BZP (bright zinc plated) treated.

adjustable foot housing



Adjustable Foot Mounting Plate



Adjustable Foot

Fitting and adjustment

The M30 adjustable foot with swivel base, is screwed into adjustable foot mounting plate. The mild steel mounting plate with adjustable foot housing, is fixed to the underside of the planter base. A M30 hex full nut is welded to the underside of the mounting plate. The adjustable foot is adjusted with a 26mm wrench.



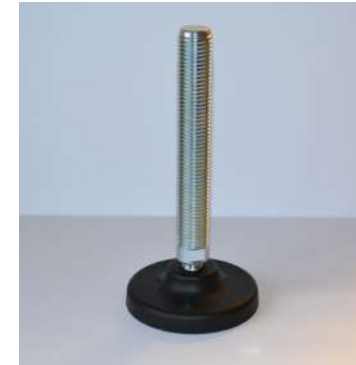
Street Design

Unit 35 Hayhill Industrial Estate Barrow upon Soar Leicestershire LE12 8LD
01509 815335 sdl@street-design.com www.street-design.com

UK Street Furniture Designers & Manufacturers

Base diameter

M30 adjustable foot with swivel base. The base diameter is 122mm.



Swivel base

The swivel base can adjust to allow for sloping ground with a fall of up to 1 in 2.06 (26°).



Bolt down base

For extra security, it is possible to drill and bolt through the base of the adjustable feet.



STRATUM planter

MATERIAL FINISHES

The Stratum sheet metal planter, comprises of a fully welded aluminium planter body bolted onto a timber or mild steel base frame.



Standard RAL 9005 Black, satin



Optional RAL 5010 Blue, satin

Standard finishes

Aluminium standard finish

As standard, the Stratum aluminium planter body will be supplied with a RAL 9005, black satin polyester powder coated finish.



RAL 9005 black

Standard base

The standard timber base is suitable for installations on level ground.



95x45mm FSC®-certified treated redwood frame with 18mm FSC®-certified hardwood faced plywood

Optional finishes (at extra cost)

Aluminium optional finish

As an extra cost option, the Stratum aluminium planter body can be supplied with the following polyester powder coated RAL colours.



RAL 9002 Light Grey



RAL 7036 Mid Grey



RAL 3020 Red



RAL 5010 Blue



RAL 4001 Red lilac



other colours available on request

Optional mild steel base standard finish

The mild steel base frames will be supplied with a hot dip galvanised finish.



The Stratum planter base frames are supplied with a hot dip galvanised finish



Street Design

Unit 35 Hayhill Industrial Estate Barrow upon Soar Leicestershire LE12 8LD
01509 815335 sdl@street-design.com www.street-design.com

UK Street Furniture Designers & Manufacturers

STRATUM planter

MATERIAL SPECIFICATION

Standard planter and base

Aluminium planter walling

4mm thick aluminium sheet

Internal cross brace straps

50x10 and 50x5mm mild steel flats

Fixing bolts

M10 x 30mm hex head bolts, bright zinc plated.

Base frame

95x45mm FSC®-certified treated redwood.

Base floor

18mm FSC®-certified hardwood faced plywood.

Internal lining

Geo-textile filter fabric membrane.

Optional steel base

Base frame

75x50x6mm and 50x50x5mm mild steel angles.

Base frame legs

50x50x3mm mild steel SHS.

Leg baseplate

100x100mm plate x 5mm thick

Base floor

18mm FSC®-certified hardwood faced plywood.

Internal lining

Geo-textile filter fabric membrane.

Optional planter accessories

Adjustable feet

M30 adjustable feet with swivel base. See Adjustable Foot page for full details.

Tree anchors

25x5mm mild steel flat, hot dip galvanised.

Watering system

Choose either the Street Design reservoir system or the Mona tank system. See Watering System page for full details.

Optional planter accessories continued

Planter benches

Stratum planters can be supplied with integral planter benches in a variety of materials. The bench slats can be supplied in FSC®-certified treated redwood or FSC®-certified hardwood. The slats will be bolted to hot dip galvanised mild steel steel bench brackets.

Moveable planters

Stratum planters can be manufactured with an integral mild steel frame allowing them to be moved when planted.

Pergola structures

Pergola structures can be manufactured as an integral part of the planter construction. The steel frame can be extended to carry the upper horizontal 145x45mm section timber bearers and cross bearers.

Trellis panels

Trellis panels can be manufactured as an integral part of the planter construction. The steel frame can be extended to carry the 30x30mm horizontal and vertical trellis timber slats.

Guarantee

All planters are guaranteed for 15 years. This guarantee is dependant on the product not being misused or abused.

Planter Prices

Contact our Sales Office on 01509 815335 for Stratum planter prices delivered to site.



Street Design

Unit 35 Hayhill Industrial Estate Barrow upon Soar Leicestershire LE12 8LD
01509 815335 sdl@street-design.com www.street-design.com

UK Street Furniture Designers & Manufacturers

General specification

Construction

All Street Design products are designed and manufactured using only quality, durable materials, construction details and fixings, to provide a long-lasting, durable life expectancy.

Assembly

Stratum planters up to 2.8 x 2.8m will be delivered to site fully assembled for off loading and positioning on site. Planters larger than 2.8m will be supplied in sections for bolting together on site.

Timber policy

All treated softwood products are manufactured using materials obtained from growers who operate under the Forest Stewardship Council® (FSC®). All iroko hardwood products are manufactured using materials obtained from growers who operate under the Forest Stewardship Council® (FSC®).

Materials

Hardwood products are constructed using FSC®-certified hardwood, from sustainable sources. Softwood products are constructed using FSC®-certified redwood that has been pressure treated, for a desired service life of 15 years in-ground contact.

All mild steel fabricated components will be hot dip galvanised after fabrication to BS EN ISO 1461:2009.

All stainless steel fabricated components will be grade 304. Grade 316 can be specified if the location or project requires it.

All mild steel fixings will be bright zinc plated, and all stainless steel fixings will be A2 (grade 304) A4 (grade 316) can be specified if the location or project requires.

Planters will be fitted with a geo-textile filter fabric lining, which allows the water to drain through the planter, while retaining the fill material.

Planter finish

Stratum aluminium planters will be supplied with a polyester powder coated finish.

Planter bench finishes

The FSC®-certified treated redwood and FSC®-certified hardwood bench slats will be left natural to reduce the need for re-staining and help reduce maintenance costs.

Optional stained finish available on request.

STRATUM planter

CARE & MAINTENANCE



Street
Design

Unit 35 Hayhill Industrial Estate Barrow upon Soar Leicestershire LE12 8LD
01509 815335 sdl@street-design.com www.street-design.com

 UK Street Furniture Designers & Manufacturers

General

All Stratum planter products are manufactured using quality materials and finishes. The base frames will be fully welded mild steel and will be hot dip galvanised after fabrication. The aluminium planter body will be supplied with a polyester powder coated finish. All products require a varied amount of maintenance, depending on the environment, usage and weather conditions. Generally, polyester powder coated aluminium will only require cleaning. In time, the optional powder coated mild steel will require re-coating.

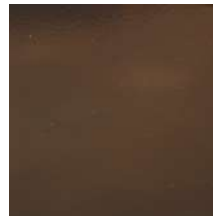
Maintaining the standard mild steel finish

Hot dip galvanised mild steel is a very durable and hard wearing finish. Dirt can be washed off with warm water and a mild detergent. Always use clean water and cleaning cloths to avoid surface contamination. After cleaning, any severe marks can be over painted with a cold galvanised, (zinc rich) aerosol spray.



Maintaining the optional mild steel finish

Polyester powder coated finishes should be washed down with clean warm water and a mild detergent. Minor touching up can be done with an aerosol to match the original powder coated colour. Details can be obtained from Street Design Limited. More severe damage can be repaired by sanding down, by manual or mechanical means, beyond the damaged area, sufficiently far as to ensure that any step in the powder coated finish is removed. This will ensure that after re-finishing the repair will be difficult to detect.



Maintaining the standard polyester powder coated aluminium finish

The polyester powder coated aluminium should be washed down with clean, warm water with a mild detergent. Minor touching up can be done with an aerosol to match the original powder coated colour. Details can be obtained from Street Design Limited. More severe damage can be repaired by sanding down, by manual or mechanical means, beyond the damaged area, sufficiently far as to ensure that any step in the powder coated finish is removed. This will ensure that after re-finishing the repair will be difficult to detect.

